

We Need Volunteers.

If you have one hour, one day or one week a month we could sure use your help.
Please contact the office for more information - (818) 591-7037

Floral designs for every day,
all occasions and events.

We have pet topiaries!



(818) 783-4846
Open 7 days. Deliveries 7 days.
www.itsabloomingbusiness.com
In Sherman Oaks Fashion Square

We have new office hours
Monday thru Saturday 8am to 5pm

We would like to thank Ms Alexandra Badel for her donation of water hoses and containers to the cemetery.
As a reminder the water located in all the burial areas is re-claimed water, Park Employees can only use this water. Water is available for family use at the office building. A hose is available in the garden by The Rainbow Bridge. This is potable water. If you have any questions, please feel free to call.

SOPHIE News - Summer Edition
S.O.P.H.I.E.
Los Angeles Pet Memorial Park
P.O.Box 8517
Calabasas, CA 91372

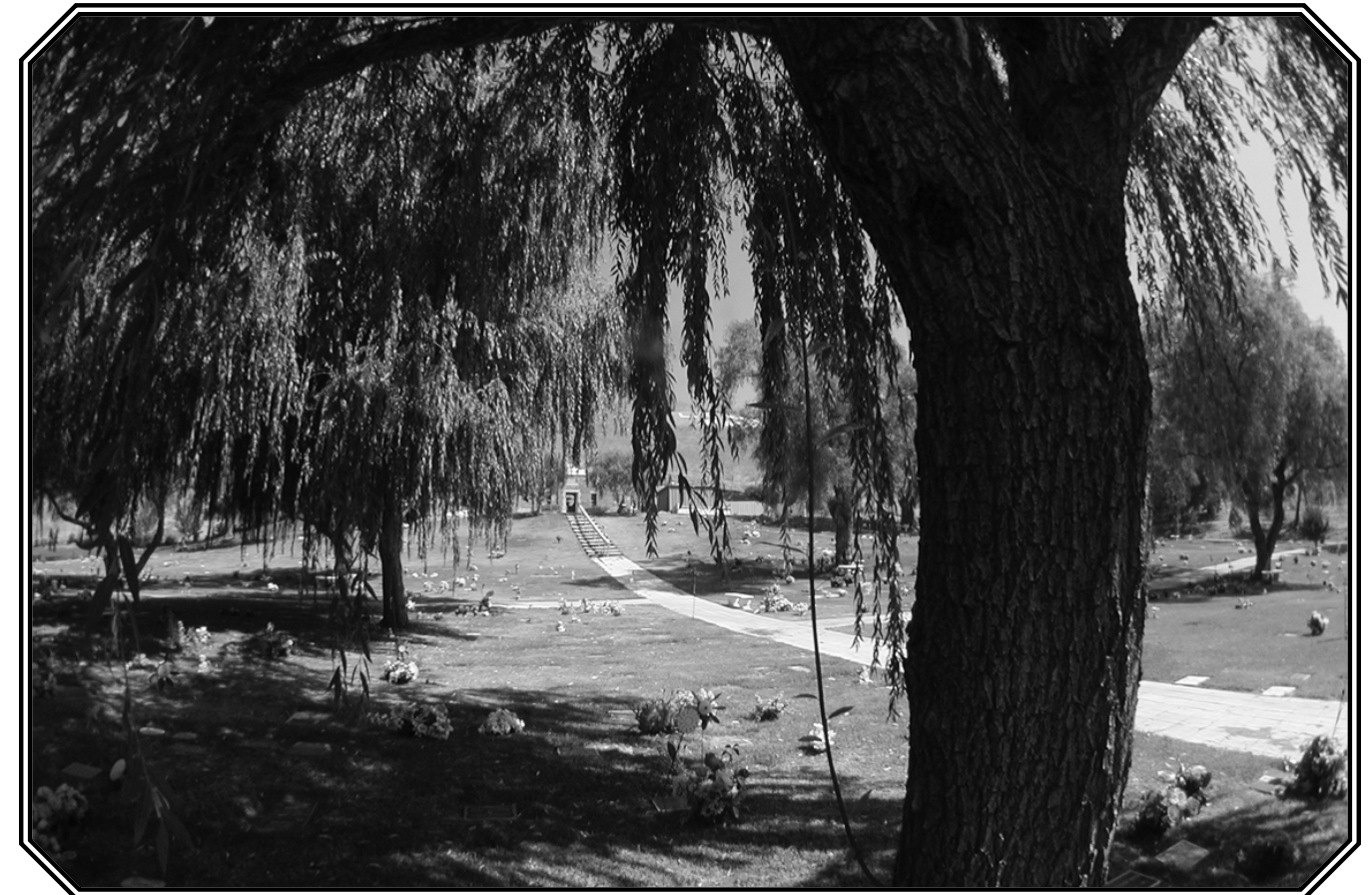
Address Correction Requested

◇ SOPHIE News ◇

Summer Edition

Save Our Pet's History In Eternity

July 2007



S.O.P.H.I.E. Board Elections 2007!

by Ellen Newth

S.O.P.H.I.E. needs *your* creative ideas, skills and talents...so why not run in our upcoming election for a seat on the Board of Directors? While serving as a Board Member is a volunteer position, it can be a very rewarding experience. You must be prepared to attend meetings on a regular basis (generally once a month) and be willing to accept various responsibilities from time to time.

Had we gotten this newsletter out sooner, and you would have liked to participate, you would have had to inform the *Nominating Committee*

by contacting the Park Office before JULY 12, 2007 or tell Sandy, Donna or Jasmine that you would be interested in running for the Board. They would have forwarded your name to our committee and one of the members would have contacted you personally soon thereafter.

However there's still time to

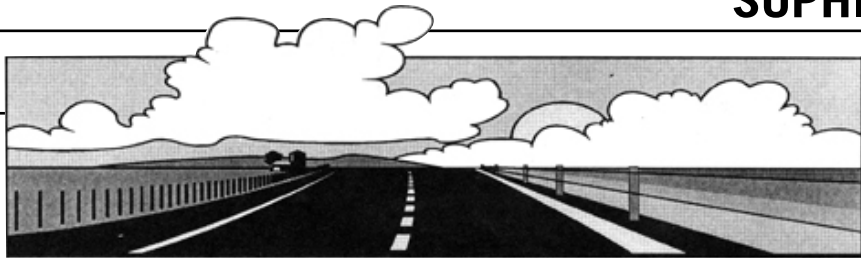
run. Aside from the Nominating Committee's designation of candidates, a member may be nominated as a candidate for the Board by a ***Written Petition of Members***. A petition nominating a candidate must identify the candidate by name and address, be accompanied by a

(continued on Page 7)

The News Inside

Seymour's Space.....2	Sophie's Angels.....4
The Manager's Desk.....3	Donated to the cemetery....3
With a Heavy Heart.....5	Board Elections.....1

Seymour's Space



Hi there!

Once again we are talking about our pets.

Love them and you get love in return.

I have been blessed with my new dog Candy.

I must tell you about a book I'm reading
"How to Live with a Neurotic Dog" by Stephen Baker.
Funny and good reading.

Come out to see us and say "hello".
See you next month.
Seymour Odens, your President



"A dog is the only thing on earth that loves you more than he loves himself."

Josh Billings

"We give dogs time we can spare, space we can spare and love we can spare. And in return, dogs give us their all. It's the best deal man has ever made."

M. Acklam



"If your dog is fat, you aren't getting enough exercise."

Anonymous

S.O.P.H.I.E. Board Elections 2007!

(continued from page 1)

biographical profile (no longer than 100 words) and must be signed by at least 13 members. **Petitions must be received in S.O.P.H.I.E.'s office no later than AUGUST 7, 2007.** The names of candidates nominated by this method will be placed on the ballot along with the candidates named by the Nominating Committee and their biographical profiles will be distributed to members along with those of the other nominated candidates.

There are currently five seats open for a two-year term of office (ending in 2009) and one of them could be *yours!* So don't delay...call the office NOW at (818) 591-7037 and let us know of your interest!

"Dogs are not our whole life, but they make our lives whole."

Roger Caras

"If you think dogs can't count, try putting three dog biscuits in your pocket and then give him only two of them."

Phil Pastoret

"Women and cats will do as they please, and men and dogs should relax and get used to the idea."

Robert A. Heinlein



Save Our Pets' History In Eternity

S.O.P.H.I.E., Inc.
Los Angeles Pet Memorial Park
5068 N. Old Scandia Lane
P.O.Box 8517
Calabasas CA 91372
818-591-7037

Park Hours:

MONDAY – SATURDAY
8:00 AM to 5:00 PM
SUNDAY AND HOLIDAYS
8:00 AM to DUSK

NEW Office Hours:

MONDAY – SATURDAY
8:00 AM to 5:00 PM

Website:

www.lapetcemetery.com

e-mail address:

lapetcem@sbcglobal.net

SOPHIE NEWS is published by S.O.P.H.I.E., Inc Corporate Board members and officers are volunteers and and serve without pay. Membership dues and gifts to S.O.P.H.I.E. are not tax deductible.

SOPHIE Officers

Seymour Odens, President
Pamela Bohnert, Vice-President
James Odom, Treasurer
David Stiller, Employee Liaison
Donna Robinson, Corporate Secretary

Pamela Bohnert
Joe Majzel
Ellen Newth
Seymour Odens
James Odom
David Stiller
Wendi Schaeffer Korkes
Alice Villalobos, D.V.M.
Abby Wayne

SOPHIE News Staff

Margie Sillman Yantz, Editor

WITH A HEAVY HEART*(continued from Page 5)*

became the recipient of the S.O.P.H.I.E.'s Angel Award in October 2001. He and his family have a number of pets buried at the Los Angeles Pet Memorial Park, including his beloved dogs, Wolfer, King, Snowball, Trusky and Nadia. Larry was a driving force and advocate of the restoration of the Mausoleum, and was pleased when S.O.P.H.I.E.'s goal had finally been reached and the Mausoleum was restored and dedicated in 2003.

Larry was always rescuing animals in need. Not long after moving to Bullhead City, he lost Nicky, a wonderful dog that he loved dearly. But his other dogs, Tiger and Lady, and J.R.'s dog, Bubba and three great cats are just a few of Larry's legacies, and are in the very capable and loving care of Paul Parker.

His mother, father and his dear friend, J.R. Mathis, preceded Larry in death. He is survived by his close friend, Paul Parker of Bullhead City, Arizona, and his cousins on his mother's side of the family, Jim Yofkowitz, Marty York, Tony York and their sister, Sue, all being the children of Adella and Len York. A private memorial service for Larry is planned in the near future in Los Angeles, California, but contributions can be made to the S.O.P.H.I.E. Endowment Care Trust Fund in Larry Ostroff's memory.

From all of us at S.O.P.H.I.E....
farewell, Larry and thank you.



"There is no psychiatrist in the world like a puppy licking your face."

Ben Williams

More SOPHIE's Angels

*Thank you to the angels who have contributed
to SOPHIE thru May 31, 2007*



Gail and George Wallace

Neil Anapol and Carolyn Seeman

Hollie Spencer

Reidun Gann

The Spence Family

Lesly Starr Shelton

Marina Krause

Ruston and Barbara Riddle

Alberta Heberger Family

Robert Koury

Roy and Sharon Clutterbuck

Sharon Dean

Michael Murphy

Carole Kasarjian

Marguerite Warman

The Friedlander Family

**From The Desk of The
Client Relations Manager**

By Sandy Dunaway



Hello everyone,

To all of our new members welcome. We hope you enjoy reading the newsletter.

I am happy to be able to report that Mr. Robinson, our grounds supervisor is doing very well after his open heart surgery. We all really miss Mr. Robinson and look forward to seeing his smiling face in August.

We are happy to report that Seymour Odens, our President has adopted "Candy", a Shepherd/Lab mix from a private rescue group.

Take care of yourself and your four-legged friends with the onset of the hot weather. When you visit us, please remember to bring some water containers (available at the garden in front of the office) for your gravesites.

And a reminder that because of the reclaimed water, we are unable to leave the hose connected when we are not in the office. However, we are very happy to help you when we are here.

The reclaimed water has made a huge difference in our water bill and we are saving money, especially during these hot summer months.

On a personal note, for those of you who know me. I am very saddened to say that my "Rennie", my little Doxie mix passed away due to heart failure in April. This has left a huge hole in my heart as well as "Tuffy's" - our companion for 13 years. I know you all understand.

Hope to see you soon, stop by and say hello.
Have a safe summer. If I can be of any help,
please feel free to contact me

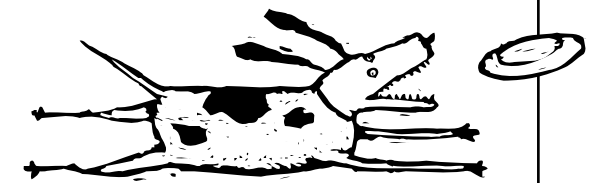
Sandy

**Donated to the cemetery**

*We would like to thank
the Deutsch Family for their
donation of a small refrigerator -
its keeping the crews drinks cold.
A special thanks from the crew.*

*The cemetery would like to thank
Mr. and Mrs. Preller for the
beautiful boxed flowering Plum Tree
that they donated to the park in
memory of their beloved "Lucy".
Thank you again for your courtesy
in checking with the office.*

*Do you have something you'd
like to share with other members??
Send me an e-mail
myenzo@sbcglobal.net*



**Please
remember all
pets must be on
a leash when at
the park.**

SOPHIE's Angels

Thank you to the angels who have contributed to SOPHIE thru May 31, 2007



Edward J Rudd
Edward Stevens
Joseph Weckerle

The Kasarjian Family

Stephen & Maddie Hellman

Estelle Tenenbaum

Gareth & June Hughes

Eileen & Gaby Wizman

Alberta Heberger

BL Smith & Mark G Phillips



Peggy Bosnyak

Ida Bercovici & Stacy Fisher



John & Elizabeth Feichtinger

Hilma Morgan Burrell

Domingo and Berta Villarreal

Raquel and Carlos Garcia

James Johnson

Mark & Derong LaBrie

Cheryl Ann Klepper

Charles & Patricia Rasmussen

Clarence & Florence DeVoe

Ruth Svabensky

The Leslie Family

Gail Wenig



Scott and Cheri Tesar in memory of J,K,K,R

Linda Hrovat in memory of Scooter

Jeff and Lisa Leonard in memory of Lucky

Sun Haataja in memory of Beautiful Cat

Shirley and Tom Roberts in memory of Megan

Carmella Cornett in memory of Posh

Robert Bohanan in memory of Rolly

Andras and Nancy Foti in memory of Maggie

Mike and Midori Inoue in memory of Teri & Yosaku

Barry and Anne Munitz in memory of Merlin

Janice Tsao in memory of Pumpkin

R.A. and C.A. Dwyer in memory of Reilly

Doug Kluthe in memory of Leo

Gail Wenig in memory of Pespa Schwartz

Atsuko Livernois in memory of Belle & Lacy

Karen Burgess in memory of Katie

WITH A HEAVY HEART...

by Gail Wilson

It is with much difficulty that I sit here trying to compose a note to you, our S.O.P.H.I.E. membership and friends, to tell you of the loss of a dear friend and colleague, a staunch supporter and advocate of all that S.O.P.H.I.E. stands for, and a man among men who always stepped up to volunteer for whatever was needed for S.O.P.H.I.E. and the Los Angeles Pet Memorial Park.

Thus, it is with a heavy heart that I bear the sad news that Larry Ostroff passed away due to complications from Parkinson's Disease on Tuesday, June 12, 2007 in Bullhead City, Arizona.

Larry, who was born in Long Beach, New York on November 13, 1944, was an only child, and was raised by his beloved mother, Lillian Faith Cowan. In 1952 when Larry was about 8 years old, Lillian and Larry moved to Los Angeles, California and the rest is history.

When Larry joined the army he learned the printing trade, which culminated in his sole ownership of Printing Unlimited in Los Angeles until his retirement to Arizona about six years ago. Under Larry's leadership, Printing Unlimited became a viable business entity and as Larry always did, he made certain that the Park benefited from his talent, offering printing services to S.O.P.H.I.E. at deep discounts. Larry alone was responsible for so much of the look and feel of all the S.O.P.H.I.E. publications, newsletters, forms and mailers and he always went above and beyond the call of duty to help where he felt he could make a difference for the Park's bottom line. "S.O.P.H.I.E.", says friend, Paul Parker, "was Larry's only charity. He loved that Park."

In 1989, I published the first of many holiday Memorial Tribute "Loving Memories" booklets. I was instructed by the then Park management to contact Printing Unlimited to coordinate

the printing duties with Larry. I phoned Larry and introduced myself. Surprisingly, we discovered that we lived just a mile or so apart in Hollywood, so we scheduled a time when I could meet with him at his home after business hours. I assured him that I would be happy to drive to the shop, but true to Larry's form, he didn't think it was necessary for me to make the trip downtown considering that we lived so close by. So down to Larry's house I went and discovered that he was a breath of fresh air and a fount of knowledge! Larry glibly spoke the language of "printing" and made my life very easy for many years to come as we worked together on myriad and sundry S.O.P.H.I.E. projects. In 1992 I joined the S.O.P.H.I.E. Board for one term and was delighted to have the opportunity to serve with Larry, who had been on the S.O.P.H.I.E. Board of Directors since 1990. It was a privilege to professionally work with Larry during my S.O.P.H.I.E. Board tenure, but most of all I cherished the friendship with him and his family, which blossomed at the same time.

In 1994 Larry Ostroff, John Purdy and Phil Waxelbaum became the trustees for the newly established S.O.P.H.I.E. Endowment Care Trust Fund. Larry continued to serve on the S.O.P.H.I.E. Board for another term and later, when he stepped down from his Board seat, served as the Trust liaison to the Board until he retired from his printing business and relocated to Arizona in December 2001. Larry was still an active and proud S.O.P.H.I.E. Endowment Care Trust Fund Trustee at the time of his death.

Larry was recognized for his many contributions to S.O.P.H.I.E. and the Los Angeles Pet Memorial Park when he
(continued on Page 6)